

ESET Log Collector

User guide

[Click here to display the online version of this document](#)

Copyright ©2023 by ESET, spol. s r.o.

ESET Log Collector was developed by ESET, spol. s r.o.

For more information visit <https://www.eset.com>.

All rights reserved. No part of this documentation may be reproduced, stored in a retrieval system or transmitted in any form or by any means, electronic, mechanical, photocopying, recording, scanning, or otherwise without permission in writing from the author.

ESET, spol. s r.o. reserves the right to change any of the described application software without prior notice.

Technical Support: <https://support.eset.com>

REV. 3/19/2023

1 Introduction	1
1.1 Help	2
2 ESET Log Collector User interface	2
2.1 List of artifacts / Collected files	13
3 ESET Log Collector Command line	13
3.1 Available targets	18
4 End User License Agreement	20

Introduction

The purpose of the ESET Log Collector application is to collect specific data, such as configuration and logs, from a machine of interest to facilitate a collection of the information from the customer's machine during a support case resolution. You can specify what information to collect from the pre-defined [list of artifacts](#), the maximum age of log records collected, the format of the collected ESET logs and the name of the output ZIP file that will contain all collected files and information. If you run ESET Log Collector on a machine that does not have an ESET security product installed, only Windows event logs and running processes dumps can be collected.

NOTE

The ESET Log Collector has the same systems requirements as your ESET security product. ESET Log Collector runs on any Microsoft Windows operating system version.

ESET Log Collector collects selected information automatically from your system to help resolve issues quicker. When a case opened with [ESET Technical Support](#), you may be asked to provide logs from your computer. ESET Log Collector will make it easy for you to collect the needed information.

DOWNLOAD ESET LOG COLLECTOR

The ESET Log Collector contains all languages in a single executable. It lets you switch the language as needed when startup without downloading the correct localized version. The language to be used is either detected automatically or can be selected explicitly. There are two ways to specify language explicitly:

1. Use the command line switch `/lang:<language_code>`
2. Rename the file to `ESETLogCollector_<language_code>.exe`

Available values of language codes: ARE, BGR, CSY, DAN, DEU, ELL, ENU, ESL, ESN, ETI, FIN, FRA, FRC, HUN, CHS, CHT, ITA, JPN, KKZ, KOR, LTH, NLD, NOR, PLK, PTB, ROM, RUS, SKY, SLV, SVE, THA, TRK, UKR

NOTE

The ESET Log Collector is distributed as a 32-bit application. To ensure its full operation on a 64-bit system, it contains a 64-bit executable of ESET Log Collector embedded as a resource, which is extracted into a *Temp* directory and executed when a 64-bit system is detected.

You can use ESET Log Collector in two modes:

- [Graphical user interface \(GUI\)](#)
- [Command line interface \(CLI\)](#) (since version 1.8). When no command line parameters are specified, the ESET Log Collector will start in the GUI mode.

ESET product logs are collected either as **original binary files** or **filtered binary files** (default is filtered binary files) when the ESET Log Collector is operated using a GUI. In the case of a filtered binary export, you can select the maximum age of exported records. The maximum number of exported records is 1 million per log file.

NOTE

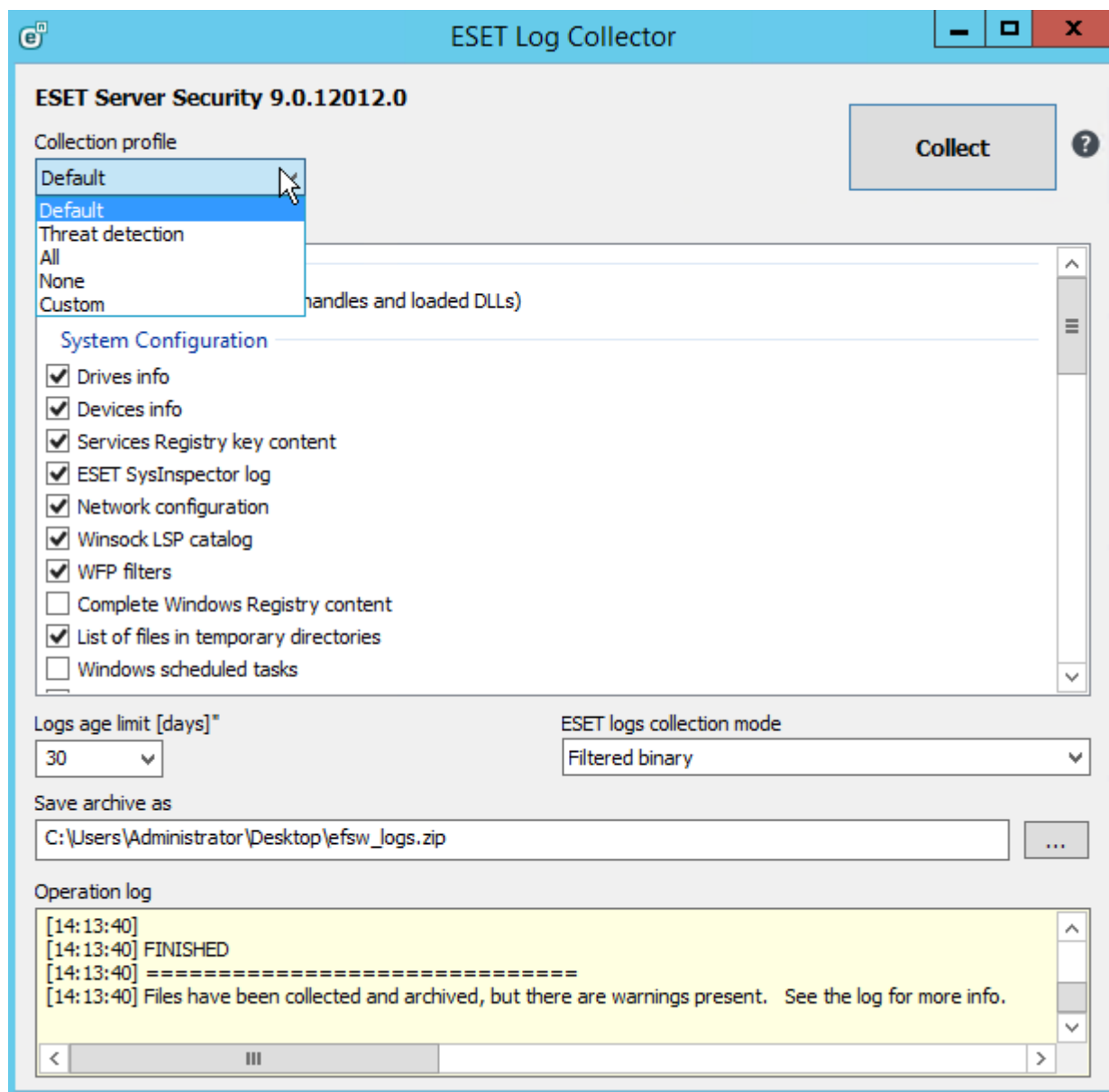
Another feature of ESET Log Collector is converting collected ESET binary log files (.dat) to XML or text file format. However, you can only convert the collected ESET binary log using ESET Log Collector [Command line interface \(CLI\)](#).

Help

To access the latest Online Help version, press the **F1** key or click the **?** button.

ESET Log Collector User interface

After you have downloaded ESET Log Collector from the [ESET website](#), launch the ESET Log Collector. Once you accept the [End User License Agreement \(EULA\)](#), ESET Log Collector will open. If you choose not to accept the terms in the End User License Agreement (EULA), click **Cancel**, and ESET Log Collector will not open.



You can choose a **Collection profile** or make your own artifact selection. A collection profile is a defined set of artifacts:

- **Default** - A default profile with most of the artifacts selected. It is used for generic support cases. (See the [List of artifacts](#) section for a detailed list of selected artifacts).
- **Threat detection** - Overlaps with the Default profile in many artifacts. Still, in contrast to the Default profile, the Threat detection profile focuses on collecting artifacts that help resolve malware detection-related support cases. (See the [List of artifacts](#) section for a detailed list of selected artifacts).
- **All** - Selects all available artifacts.
- **None** - Deselects all artifacts and allows you to select the appropriate check boxes for the logs that you want to collect.
- **Custom** - This collection profile is switched to automatically when you make a change to a previously chosen profile and your current combination of selected artifacts does not fit any of the above mentioned profiles.

NOTE

The list of displayed artifacts that can be collected changes depending on the detected type of ESET security product installed on your system, your system configuration, as well as other software such as Microsoft Server applications. Only relevant artifacts are available.

Select the **Logs age limit [days]** and ESET logs collection mode (default option is **Filtered binary**).

ESET logs collection mode:

- **Filtered binary** - Records are filtered by the number of days specified by **Logs age limit [days]**, which means that only records for the last number of days will be collected.
- **Original binary from disk** - Copies ESET binary log files ignoring **Logs age limit [days]** value for ESET logs to collect all records regardless of age. However, the age limit still applies to non-ESET logs, such as Windows Event Logs, Microsoft SharePoint logs or Domino logs.

You can specify where you want to save archive files and click **Save**. The archive filename is already pre-defined. Click **Collect**. Application's operation can be interrupted anytime during the processing by pressing the same button – the button's caption changes to **Cancel** during processing. Success or failure is indicated by a pop-up message. In case of failure, the log panel contains additional error information.

If ESET SysInspector is not present on your machine and you click **Collect**, you will be asked whether you want to download ESET SysInspector. If you do not want to collect ESET SysInspector log, use the check box to deselect it.

During the collection, you can view the operation log window at the bottom to see what operation is currently in progress. When collection is finished, all the collected and archived data will be displayed. This means that collection was successful and the archive file (for example, *emsx_logs.zip*, *ees_logs.zip* or *eea_logs.zip*) has been saved in the specified location. (See the [List of artifacts](#) section for detailed information).

List of artifacts / Collected files

This section describes the files contained in the resulting *.zip* file. Description is divided into subsections based on the information type (files and artifacts).

Location / File name	Description
metadata.txt	Contains the date of the <i>.zip</i> archive creation, ESET Log Collector version, ESET product version and basic licensing information.

Location / File name	Description
collector_log.txt	A copy of the log file from the GUI contains data up to the point when the .zip file is being created.

Windows Processes

Artifact name	Collection profile		Location / File name	Description
	Default	Threat detection		
Running processes (open handles and loaded DLLs)	?	?	Windows\Processes\Processes.txt	Text file containing a list of running processes on the machine. For each process, the following items are printed: <ul style="list-style-type: none"> • PID • Parent PID • Number of threads • Number of open handles grouped by type • Loaded modules • User account it is running under • Memory usage • Timestamp of start • Kernel and user time • I/O statistics • Command line
Running processes (open handles and loaded DLLs)	?	?	Windows\ProcessesTree.txt	Text file containing a tree of running processes on the machine. For each process following items are printed: <ul style="list-style-type: none"> • PID • User account it is running under • Timestamp of start • Command line

Windows Logs

Artifact name	Collection profile		Location / File name	Description
	Default	Threat detection		
Application event log	✓	✓	Windows\Logs\Application.xml	Windows Application event logs in a custom XML format. Only messages from the last 30 days are included.
System event log	✓	✓	Windows\Logs\System.xml	Windows System event logs in a custom XML format. Only messages from the last 30 days are included.
Terminal services - LSM operational event log*	✓	✓	Windows\Logs\LocalSessionManager-Operational.evtx	Windows event log containing information about RDP sessions.
Drivers install logs	✓	?	Windows\Logs\catroot2_dberr.txt	Contains information about catalogs that have been added to "catstore" during driver installation.
SetupAPI logs*	✓	?	Windows\Logs\SetupAPI\setupapi*.log	Device and application installation text logs.
WMI Activity operating event log	✓	✓	Windows\Logs\WMI-Activity.evtx	Windows event log containing WMI Activity tracing data. Only messages from the last 30 days are included.
Application event log	✓	✓	Windows\Logs\Application.evtx	Windows Application event log file. Only messages from the last 30 days are included.
System event log	✓	✓	Windows\Logs\System.evtx	Windows System event log file. Only messages from the last 30 days are included.

Windows Logs				
Services Registry key content			Windows\Services.reg	Contains a registry key content of KEY_LOCAL_MACHINE\SYSTEM\CurrentControlSet\Services. Collecting this key may be helpful in case of issues with drivers.

**Windows Vista and newer*

System Configuration				
Artifact name	Collection profile		Location / File name	Description
	Default	Threat detection		
Drives info	✓	✓	Windows\drives.txt Windows\volumes.txt	Collected text file containing information about disk drives and volumes.
Devices info	✓	✓	Windows\devices/*.txt	Collected multiple text files containing classes and interfaces information about devices.
Network configuration	✓	✓	Config\network.txt	Collected text file containing network configuration. (Result of executing ipconfig /all)
ESET SysInspector log	✓	✓	Config\SysInspector.xml	SysInspector log in the XML format.
Winsock LSP catalog	✓	✓	Config\WinsockLSP.txt	Collect the output of netsh winsock show catalog command.
WFP filters*	✓	✓	Config\WFPFilters.xml	Collected WFP filters configuration in the XML format.
Complete Windows Registry content	?	✓	Windows\Registry*	Collected multiple binary files containing Windows Registry data.
List of files in temporary directories	✓	✓	Windows\TmpDirs/*.txt	Collected multiple text files with content of system's user temp directories, %windir%/temp, %TEMP% and %TMP% directories.
Windows scheduled tasks	?	✓	Windows\Scheduled Tasks*.*	Collected multiple xml files containing all tasks from the Windows Task Scheduler to help detect malware that exploits the Task Scheduler. Since the files are located in subfolders, the whole structure is collected.
WMI repository	?	✓	Windows\WMI Repository*.*	Collected multiple binary files containing WMI database data (meta-information, definition and static data of WMI classes). Collecting these files may help identify malware that uses WMI for persistence (such as Turla). Since WMI files may be located in subfolders, the whole structure is collected.

System Configuration

Windows Server roles & features	✓	?	Windows\server_features.txt	Text file containing a tree of all Windows Server features. Each feature contains the following information: oInstalled state oLocalized name oCode name oState (available on Microsoft Windows Server 2012 and newer)
---------------------------------	---	---	-----------------------------	--

**Windows 7 and newer*

ESET Installer

Artifact name	Collection profile		Location / File name	Description
	Default	Threat detection		
ESET Installer logs	✓	?	ESET\Installer*.log	Installation logs that were created during the installation of ESET NOD32 Antivirus and ESET Smart Security 10 Premium products.

ESET Remote Administrator

Artifact name	Collection profile		Location / File name	Description
	Default	Threat detection		
EP/ESMC/ERA Server logs	✓	?	ERA\Server\Logs\RemoteAdministratorServerDiagnostic<datetime>.zip	Create Server product logs in the ZIP archive. It contains trace, status and last-error logs.
EP/ESMC/ERA Agent logs	✓	?	ERA\Agent\Logs\RemoteAdministratorAgentDiagnostic<datetime>.zip	Create Agent product logs in the ZIP archive. It contains trace, status and last-error logs.
EP/ESMC/ERA process information and dumps*	?	?	ERA\Server\Process and old dump\RemoteAdministratorServerDiagnostic<datetime>.zip	Server process dump(s).
EP/ESMC/ERA process information and dumps*	?	?	ERA\Agent\Process and old dump\RemoteAdministratorAgentDiagnostic<datetime>.zip	Agent process dump(s).
EP/ESMC/ERA configuration	✓	?	ERA\Server\Config\RemoteAdministratorServerDiagnostic<datetime>.zip	Server configuration and application information files in the ZIP archive.

ESET Remote Administrator

EP/ESMC/ERA configuration	✓	?	ERA\Agent\Config\RemoteAdministratorAgentDiagnostic<datetime>.zip	Agent configuration and application information files in the ZIP archive.
EP/ESMC/ERA Rogue Detection Sensor logs	✓	?	ERA\RD Sensor\Rogue Detection SensorDiagnostic<datetime>.zip	A ZIP containing RD Sensor trace log, last-error log, status log, configuration, dump(s) and general information files.
EP/ESMC/ERA MDMCore logs	✓	?	ERA\MDMCore\RemoteAdministratorMDMCoreDiagnostic<datetime>.zip	A ZIP containing MDMCore trace log, last-error log, status log, dump(s) and general information files.
EP/ESMC/ERA Proxy logs	✓	?	ERA\Proxy\RemoteAdministratorProxyDiagnostic<datetime>.zip	A ZIP containing ERA Proxy trace log, last-error log, status log, configuration, dump(s) and general information files.
EP/ESMC/ERA Agent database	✓	?	ERA\Agent\Database\data.db	EP/ESMC/ERA Agent database file.
Apache Tomcat configuration	✓	?	ERA\Apache\Tomcat\conf*.*	Apache Tomcat configuration files, it contains a copy of server.xml file without sensitive information.

ESET Remote Administrator

Apache Tomcat logs	✓	?	ERA\Apache\Tomcat\logs*.log ERA\Apache\Tomcat\EraAppData\logs*.log ERA\Apache\Tomcat\EraAppData\WebConsole*.log	Apache Tomcat log(s) in text format located in Apache Tomcat install or application directory. It also contains WebConsole logs.
Apache HTTP Proxy configuration	✓	?	ERA\Apache\Proxy\conf\httpd.conf	Apache HTTP Proxy configuration file.
Apache HTTP Proxy logs	✓	?	ERA\Apache\Proxy\logs*.log	Apache HTTP Proxy log(s) in text format located.

**EP/ESMC/ERA Server or EP/ESMC/ERA Agent*

ESET Configuration

Artifact name	Collection profile		Location / File name	Description
	Default	Threat detection		
ESET product configuration	✓	✓	info.xml	Informational XML that details the ESET product installed on a system. It contains basic system information, installed product information and a list of product modules.
ESET product configuration	✓	✓	versions.csv	Since version 4.0.3.0 the file is always included (without any dependences). It contains installed product info. versions.csv must exist in ESET AppData directory to be included.
ESET product configuration	✓	✓	features_state.txt	Contains information about ESET product features and their states (Active, Inactive, Not integrated). The file is always collected and is not tied to any selectable artifact.
ESET product configuration	✓	✓	Configuration\product_conf.xml	Create XML with exported product configuration.
ESET data and install directory file list	✓	✓	ESET\Config\data_dir_list.txt	Create text file containing list of files in ESET AppData directory and all their subdirectories.
ESET data and install directory file list	✓	✓	ESET\Config\install_dir_list.txt	Create text file containing list of files in ESET Install directory and all their subdirectories.
ESET drivers	✓	✓	ESET\Config\drivers.txt	Collect information about installed ESET drivers.

ESET Configuration

ESET Personal firewall configuration	✓	✓	ESET\Config\EpfwUser.dat	Copy file with ESET Personal firewall configuration.
ESET Registry key content	✓	✓	ESET\Config\ESET.reg	Contains a registry key content of HKLM\SOFTWARE\ESET
Winsock LSP catalog	✓	✓	Config\WinsockLSP.txt	Collect the output of netsh winsock show catalog command.
Last applied policy	✓	✓	ESET\Config\lastPolicy.dat	The policy applied by EP/ESMC/ERA.
ESET components	✓	✓	ESET\Config\msi_features.txt	Collected information about available ESET product MSI installer components.
HIPS configuration	✓	✓	ESET\Config\HipsRules.bin	HIPS rules data.
Connected Home configuration	✓	✓	ESET\Config\homenet.dat	Connected Home data.

Quarantine

Artifact name	Collection profile		Location / File name	Description
	Default	Threat detection		
Info about quarantined files	✓	✓	ESET\Quarantine\quar_info.txt	Create text file with a list of quarantined objects.
Small quarantined files (< 250KB)	✓	?	ESET\Quarantine*.*(< 250KB)	Quarantine files smaller than 250 KB.
Big quarantined files (> 250KB)	?	✓	ESET\Quarantine*.*(> 250KB)	Quarantine files larger than 250 KB.

ESET Logs

Artifact name	Collection profile		Location / File name	Description
	Default	Threat detection		
ESET Events log	✓	✓	ESET\Logs\Common\warnlog.dat	ESET Product event log in binary format.
ESET Detected threats log	✓	✓	ESET\Logs\Common\virlog.dat	ESET Detected threats log in binary format.
ESET Computer scan logs	?	✓	ESET\Logs\Common\eScan*.dat	ESET Computer scan log(s) in binary format.
ESET HIPS log*	✓	✓	ESET\Logs\Common\hipslog.dat	ESET HIPS log in binary format.
ESET Parental control logs*	✓	✓	ESET\Logs\Common\parentallog.dat	ESET Parental control log in binary format.
ESET Device control log*	✓	✓	ESET\Logs\Common\devctrllog.dat	ESET Device control log in binary format.
ESET Webcam protection log*	✓	✓	ESET\Logs\Common\webcamlog.dat	ESET Webcam protection log in binary format.
ESET On-demand server database scan logs	✓	✓	ESET\Logs\Common\ServerOnDemand*.dat	ESET server On-demand log(s) in binary format.
ESET Hyper-V server scan logs	✓	✓	ESET\Logs\Common\HyperVOnDemand*.dat	ESET Hyper-V server scan log(s) in binary format.

ESET Logs

MS OneDrive scan logs	✓	✓	ESET\Logs\Common\O365OnDemand*.dat	MS OneDrive scan log(s) in binary format.
ESET Blocked files log	✓	✓	ESET\Logs\Common\blocked.dat	ESET Blocked files log(s) in binary format.
ESET Sent files log	✓	✓	ESET\Logs\Common\sent.dat	ESET Sent files log(s) in binary format.
ESET Audit log	✓	✓	ESET\Logs\Common\audit.dat	ESET Audit log(s) in binary format.

**Option is displayed only when the file exists.*

ESET Network Logs

Artifact name	Collection profile		Location / File name	Description
	Default	Threat detection		
ESET Network protection log*	✓	✓	ESET\Logs\Net\epfwlog.dat	ESET Network protection log in binary format.
ESET Filtered websites log*	✓	✓	ESET\Logs\Net\urllog.dat	ESET Websites filter log in binary format.
ESET Web control log*	✓	✓	ESET\Logs\Net\webctllog.dat	ESET Web control log in binary format.
ESET pcap logs	✓	?	ESET\Logs\Net\EsetProxy*.pcapng	Copy ESET pcap logs.

**Option is displayed only when the file exists.*

ESET Diagnostics

Artifact name	Collection profile		Location / File name	Description
	Default	Threat detection		
Local cache database	?	✓	ESET\Diagnostics\local.db	ESET scanned files database.
General product diagnostics logs	✓	?	ESET\Diagnostics*.*	Files (mini-dumps) from ESET diagnostics folder.
ECP diagnostic logs	✓	?	ESET\Diagnostics\ECP*.xml	ESET Communication Protocol diagnostic logs are generated in case of problems with product activation and communication with activation servers.

Update

Artifact name	Collection profile		Location / File name	Description
	Default	Threat detection		
Product update logs	✓	✓	C:\ProgramData\ESET\ESET Security\MicroPcu	Create XML with exported product configuration.

ESET Secure Authentication

Artifact name	Collection profile		Location / File name	Description
	Default	Threat detection		
ESA logs	✓	?	ESA*.log	Exported log(s) from the ESET Secure Authentication.

ESET Inspect

Artifact name	Collection profile		Location / File name	Description
	Default	Threat detection		
EI Server logs	✓	?	EEI\Server\Logs*.log	Server product text logs.
EI Agent logs	✓	?	EEI\Agent\Logs*.log	Agent product text logs.
EI Server configuration	✓	?	EEI\Server\eiserver.ini	An .ini file containing Server product configuration.
EI Agent configuration	✓	?	EEI\Agent\eiagent.ini	An .ini file containing Agent product configuration.
EI Server policy	✓	?	EEI\Server\eiserver.policy.ini	An .ini file containing Server product policy.
EI Agent policy	✓	?	EEI\Agent\eiagent.policy.ini	An .ini file containing Agent product policy.
EI Server certificates	✓	?	EEI\Server\Certificates*.*	Contains certification files used by Server product. Since the files are located in subfolders, the whole structure is collected.
EI Agent certificates	✓	?	EEI\Agent\Certificates*.*	Contains certification files used by Agent product. Since the files are located in subfolders, the whole structure is collected.
EI Server dumps	✓	?	EEI\Server\Diagnostics*.*	Server product dump files.
MySQL Server configuration	✓	?	EEI\My SQL\my.ini	An .ini file containing MySQL Server configuration used by ESET Inspect Server product.
MySQL Server logs	✓	?	EEI\My SQL\EEI.err	An error text log of MySQL Server used by ESET Inspect Server product.

ESET Full Disk Encryption

Artifact name	Collection profile		Location / File name	Description
	Default	Threat detection		
EFDE logs	?	?	EFDE\AIS\Logs*.* EFDE\Core*.log	Exported logs (AIS and Core) from the ESET Full Disk Encryption.
EFDE license data	?	?	EFDE\AIS\Licesne*.*	License data files of EFDE.
EFDE configuration	?	?	EFDE\AIS\lastpolicy.dat	Contains configuration of EFDE.

ESET Email Logs (ESET Mail Security for Exchange, ESET Mail Security for Domino)

Artifact name	Collection profile		Location / File name	Description
	Default	Threat detection		

ESET Email Logs (ESET Mail Security for Exchange, ESET Mail Security for Domino)

ESET Spam log	✓	?	ESET\Logs\Email\spamlog.dat	ESET Spam log in binary format.
ESET Greylist log	✓	?	ESET\Logs\Email\greylistlog.dat	ESET Greylist log in binary format.
ESET SMTP protection log	✓	?	ESET\Logs\Email\smtpprot.dat	ESET SMTP protection log in binary format.
ESET mail server protection log	✓	?	ESET\Logs\Email\mailserver.dat	ESET Mail server protection log in binary format.
ESET diagnostic e-mail processing logs	✓	?	ESET\Logs\Email\MailServer*.dat	ESET diagnostic e-mail processing logs in binary format, direct copy from disk.
ESET Spam log*	✓	?	ESET\Logs\Email\spamlog.dat	ESET Spam log in binary format.
ESET Antispam configuration and diagnostic logs	✓	?	ESET\Logs\Email\Antispam\antispam.*.log ESET\Config\Antispam*.*	Copy ESET Antispam configuration and diagnostic logs.

*Option is displayed only when the file exists.

ESET SharePoint logs (ESET Security for SharePoint)

Artifact name	Collection profile		Location / File name	Description
	Default	Threat detection		
ESET SHPIO.log	✓	?	ESET\Log\ESHP\SHPIO.log	ESET Diagnostic log from the SHPIO.exe utility.

Product specific logs - options are available for specific product.

Domino (ESET Mail Security for Domino)

Artifact name	Collection profile		Location / File name	Description
	Default	Threat detection		
Domino IBM_TECHNICAL_SUPPORT logs + notes.ini	✓	?	LotusDomino\Log\notes.ini	IBM Domino configuration file.
Domino IBM_TECHNICAL_SUPPORT logs + notes.ini	✓	?	LotusDomino\Log\IBM_TECHNICAL_SUPPORT*.*	IBM Domino logs, not older than 30 days.

MS SharePoint (ESET Security for SharePoint)

Artifact name	Collection profile		Location / File name	Description
	Default	Threat detection		

MS SharePoint (ESET Security for SharePoint)

MS SharePoint logs	✓	?	SharePoint\Logs*.log	MS SharePoint logs, not older than 30 days.
SharePoint Registry key content	✓	?	SharePoint\WebServerExt.reg	Contains a registry key content of HKEY_LOCAL_MACHINE\SOFTWARE\Microsoft\Shared Tools\Web Server Extensions. Available only when ESET Security for SharePoint is installed.

MS Exchange (ESET Mail Security for Exchange)

Artifact name	Collection profile		Location / File name	Description
	Default	Threat detection		
MS Exchange transport agents registration	✓	?	Exchange\agents.config	MS Exchange transport agents registration config file. For Microsoft Exchange Server 2007 and newer.
MS Exchange transport agents registration	✓	?	Exchange\sinks_list.txt	MS Exchange event sinks registration dump. For Microsoft Exchange Server 2000 and 2003.
MS Exchange EWS logs	✓	?	Exchange\EWS*.log	Collecting of EWS Exchange Server logs.

ESET Log Collector Command line

The Command line interface is a feature that enables you to use ESET Log Collector without the GUI. For example, on Server Core or Nano Server installation, also if you require or simply wish to use command line instead of the [GUI](#). There is also an extra command line only function available that converts the ESET binary log file to an XML format or to a text file.

Command line help - Run `start /wait ESETLogCollector.exe /?` to display the syntax help. It also lists [available targets \(artifacts\)](#) that can be collected. Contents of the list depend on the detected type of ESET security product installed on the system you are running ESET Log Collector on. Only relevant artifacts are available.

NOTE

We recommend you use `start /wait` prefix when executing any command because the ESET Log Collector is primarily a GUI tool, The Windows command line interpreter (shell) does not wait for the executable to terminate and instead returns immediately and displays a new prompt. When you use `start /wait` prefix, you will make the Windows shell wait for ESET Log Collector's termination.

If you are running ESET Log Collector for the first time, ESET Log Collector requires the [End User License Agreement \(EULA\)](#) to be accepted. To accept EULA, run the first command with `/accepteula` parameter. Any subsequent commands will run without the need of the `/accepteula` parameter. If you choose not to accept the terms in the End User License Agreement (EULA) and do not use the `/accepteula` parameter, your command will not be executed. Also, the `/accepteula` parameter must be specified as the first parameter, for example: `start /wait ESETLogCollector.exe /accepteula /age:90 /otype:fbn /targets:prodcnf,qinfo,warn,threat,ondem collected_eset_logs.zip`

Usage:

`[start /wait] ESETLogCollector.exe [options] <out_zip_file>` - Collects logs according to specified options and creates output archive file in a ZIP format.

`[start /wait] ESETLogCollector.exe /Bin2XML [/All] [/UTC] <eset_binary_log> <output_xml_file>` - Converts collected ESET binary log file (.dat) to an XML file.

`[start /wait] ESETLogCollector.exe /Bin2Txt [/All] [/UTC] <eset_binary_log> <output_txt_file>` - Converts collected ESET binary log file (.dat) to a text file.

Options:

`/Age:<days>` - Maximum age of collected log records in days. The value range is 0-999, 0 means infinite, and default is 30.

`/OType:<xml|fbin|obin>` - Collection format for ESET logs:

`xml` - Filtered XML

`fbin` - Filtered binary (default)

`obin` - Original binary from disk

`/All` - Translate also records marked as deleted. This parameter applies only when converting the collected ESET binary log file to XML or TXT.

`/UTC` - Convert the time format of the log records from local time to UTC format.

`/Targets:<id1>[,<id2>...]` - List of artifacts to collect. If not specified, a default set is collected. The special value 'all' means all targets.

`/NoTargets:<id1>[,<id2>...]` - List of artifacts to skip. This list is applied after the Targets list.

`/Profile:<default|threat|all>` - A collection profile is a defined set of targets:

`Default` - Profile used for general support cases.

`Threat` - Profile related to the threat detection cases.

`All` - Selects all available targets.

NOTE

When you choose **Filtered XML** or **Filtered binary** collection format, the filtering means that only records for the last number of days will be collected (specified by `/Age:<days>` parameter). If you choose **Original binary from disk**, parameter `/Age:<days>` will be ignored for all ESET logs. For other logs, such as Windows Event Logs, Microsoft SharePoint logs or IBM Domino logs, parameter `/Age:<days>` will be applied so that you can limit non-ESET log records to a specified number of days and have original ESET binary files collected (copied) without age limit.

NOTE

Parameter `/All` allows for conversion of all log records, including those that were deleted via GUI but are present in the original binary file marked as deleted (log records not visible in the GUI).


```
Administrator: C:\Windows\system32\cmd.exe
C:\Users\Administrator\Desktop>start /wait ESETLogCollector.exe /?

[7:52:01 AM] ESET Log Collector v4.5.0.0 (4/14/2022) - 64 bit
[7:52:01 AM] Copyright (c) 1992-2022 ESET, spol. s r.o. All rights reserved.
[7:52:01 AM]
[7:52:01 AM] Detected product type: emsl

Usage: [start /wait] ESETLogCollector.exe [language] [options] <out_zip_file>
       [start /wait] ESETLogCollector.exe [language] /Bin2XML [/All] [/UTC] <eset_binary_log> <output_xml_file>
       [start /wait] ESETLogCollector.exe [language] /Bin2Txt [/All] [/UTC] <eset_binary_log> <output_txt_file>

Language:
  /Lang:<langID|?>
    Override default user interface language with specified language.
    langID - Language ID. Accepted values: ARE|BGR|CSY|DAN|DEU|ELL|ENU|ESL|ESN|ETI|FIN|FRA|FRC|HUN|CHS|CHT|ITA|JPN|KKZ|KOR|LTH|NLD|NOR|PLK|PTB|ROM|RUS|SKY|SLV|SVE|THA|TRK|UKR
    ?      - Display language name for all supported language IDs.

  /LangIDs
    Equivallent of '/Lang:?' option.

Options:
  /Age:<days>
    Maximum age of collected log records in days. Value range is 0 - 999, 0 means infinite, default is 30.

  /OType:<xml|fb|obin>
    Collection format for ESET logs:
    xml - Filtered XML
    fb - Filtered binary (default)
    obin - Original binary from disk

  /All
    Translate also records marked as deleted.

  /UTC
    Convert log record time to UTC instead of local time.

  /Targets:<id1>[,<id2>...]
    List of artifacts to collect. If not specified, a default set is collected. Special value 'all' means all targets.

  /NoTargets:<id1>[,<id2>...]
    List of artifacts to skip. This list is applied after the Targets list.

  /Profile:<default|threat|all>
    Collection profile is a defined set of targets:
    default - Profile used for general support cases
    threat - Profile related to the threat detection cases
    all - Selects all available targets

Available artifacts:
  Proc - Running processes (open handles and loaded DLLs)
  Drives - Drives info
  Devices - Devices info
  SvcsReg - Services Registry key content
  EvLogApp - Application event log
  EvLogSys - System event log
  SetupAPI - SetupAPI logs
  EvLogLSM - Terminal services - LSM operational event log
  EvLogWMI - WMI Activity operational event log
  SysIn - ESET SysInspector log
```

EXAMPLE

This example command changes the language to Italian. You can use any of the available languages: ARE, BGR, CSY, DAN, DEU, ELL, ENU, ESL, ESN, ETI, FIN, FRA, FRC, HUN, CHS, CHT, ITA, JPN, KKZ, KOR, LTH, NLD, NOR, PLK, PTB, ROM, RUS, SKY, SLV, SVE, THA, TRK, UKR
`/lang: ITA`

EXAMPLE

This example command collects ESET product configuration, Info about quarantined files, ESET Events log, ESET Detected threats log and ESET Computer scan logs in Filtered binary collection mode with records for last 90 days:

```
start /wait ESETLogCollector.exe /age:90 /otype:fbin /targets:prodcnf,qinfo,warn,threat,ondem collected_eset_logs.zip
```

EXAMPLE

This example command collects Running processes, System event log, ESET SysInspector log, ESET product configuration, ESET Events log and General product diagnostics logs in Original binary from disk collection mode:

```
start /wait ESETLogCollector.exe /otype:obin /targets:proc,evlogsys,sysin,prodcnf,warn,diag collected_diag_logs.zip
```

EXAMPLE

This example command collects ERA Agent logs, ERA Server logs, ERA configuration and ERA Rogue Detection Sensor logs in Filtered XML collection mode with records for last 10 days:

```
start /wait ESETLogCollector.exe /age:10 /otype:xml /targets:eraag,erasrv,eraconf,erard collected_era_logs.zip
```

EXAMPLE

This example command converts collected ESET binary log file (Computer scan log) to an XML file format with all records (including logs marked as deleted):

```
start /wait ESETLogCollector.exe /bin2xml /all C:\collected_eset_logs\ESET\Logs\Common\eScan\ndl27629.dat scan_log.xml
```

Similarly, collected Computer scan log file conversion to a text file, but omitting logs marked as deleted:

```
start /wait ESETLogCollector.exe /bin2txt C:\collected_eset_logs\ESET\Logs\Common\eScan\ndl27629.dat scan_log.txt
```

Available targets

This is a complete list of all possible targets that can be collected using [ESET Log Collector Command line](#) specified by `/Targets:` option.

NOTE

You may not see all the targets listed here. This is because available targets for your system only are listed when you run command line help `start /wait ESETLogCollector.exe /?` Targets not listed do not apply to your system or configuration.

Proc	Running processes (open handles and loaded DLLs)
Drives	Drives info
Devices	Devices info
SvcsReg	Services Registry key content
EvLogApp	Application event log
EvLogSys	System event log
SetupAPI	SetupAPI logs
EvLogLSM	Terminal services - LSM operational event log
EvLogWMI	WMI Activity operational event log
SysIn	ESET SysInspector log
DrvLog	Drivers install logs
NetCnf	Network configuration
WFPFil	WFP filters
InstLog	ESET Installer logs
EfdeLogs	EFDE logs
EfdeLic	EFDE license data
EfdeCfg	EFDE configuration

EraAgLogs	EP/ESMC/ERA Agent logs
EraSrv	EP/ESMC/ERA Server logs
EraConf	EP/ESMC/ERA configuration
EraDumps	EP/ESMC/ERA process information and dumps
EraRD	EP/ESMC/ERA Rogue Detection Sensor logs
EraMDM	EP/ESMC/ERA MDMCore logs
EraProx	EP/ESMC/ERA Proxy logs
EraTomcatCfg	Apache Tomcat configuration
EraTomcatLogs	Apache Tomcat logs
EraProxyCfg	Apache HTTP Proxy configuration
EraProxyLogs	Apache HTTP Proxy logs
EsaLogs	ESET Secure Authentication logs
ProdCnf	ESET product configuration
DirList	ESET data and install directory file list
Drivers	ESET drivers
EsetReg	ESET Registry key content
EsetCmpts	ESET components
QInfo	Info about quarantined files
QFiles	Quarantined files
QSmallFiles	Small quarantined files
QBigFiles	Big quarantined files
Warn	ESET Events log
Threat	ESET Detected threats log
OnDem	ESET Computer scan logs
Hips	ESET HIPS log
Fw	ESET Network protection log
FwCnf	ESET Personal firewall configuration
Web	ESET Filtered websites log
Paren	ESET Parental control logs
Dev	ESET Device control log
WCam	ESET Webcam protection log
WebCtl	ESET Web control log
OnDemDB	ESET On-demand server database scan logs
HyperV	ESET Hyper-V server scan logs
Spam	ESET Spam log
Grey	ESET Greylist log
SMTProt	ESET SMTP protection log
Email	ESET mail server protection log
EmDiag	ESET diagnostic e-mail processing logs
ScanCache	Local cache database
SpamDiag	ESET Antispam configuration and diagnostic logs
Diag	General product diagnostics logs
ECPDiag	ECP diagnostics logs
pcap	ESET pcap logs
XAg	MS Exchange transport agents registration
XEws	MS Exchange EWS logs
Domino	Domino IBM_TECHNICAL_SUPPORT logs + notes.ini
SHPIO	ESET SHPIO.log

SP	MS SharePoint logs
SHPReg	SharePoint Registry key content
AllReg	Complete Windows Registry content
WinsockCat	Winsock LSP catalog
TmpList	List of files in temporary directories
SchedTaks	Windows scheduled tasks
Wmirepo	WMI repository
WinSrvFeat	Windows Server roles&features
LastPol	Last applied policy
BlkF	ESET Blocked files log
SentF	ESET Sent files log
OneDrive	MS OneDrive scan logs
Audit	ESET Audit logs
HipsCfg	HIPS configuration
HomeNetCfg	Connected Home configuration
EeiSLogs	EI Server logs
EeiSCfg	EI Server configuration
EeiSPol	EI Server policy
EeiSCerts	EI Server certificates
EeiSDumps	EI Server dumps
EeiMySQLCfg	MySQL Server configuration
EeiMySQLLogs	MySQL Server logs

End User License Agreement

IMPORTANT: Please read the terms and conditions of product application set out below carefully prior to download, installation, copy or use. **THROUGH DOWNLOADING, INSTALLING, COPYING OR USING THE SOFTWARE YOU ARE EXPRESSING YOUR CONSENT TO THESE TERMS AND CONDITIONS.**

End User License Agreement

Under the terms of this End User License Agreement (hereinafter referred to as "the Agreement") executed by and between ESET, spol. s r. o., having its registered office at Einsteinova 24, 851 01 Bratislava, Slovak Republic, registered in the Commercial Register administered by Bratislava I District Court, Section Sro, Entry No 3586/B, Business Registration Number: 31333532 (hereinafter referred to as "ESET" or "the Provider") and you, a physical person or legal entity (hereinafter referred to as "You" or "the End User"), You are entitled to use the Software defined in Article 1 of this Agreement. The Software defined in Article 1 of this Agreement can be stored on a data carrier, sent via electronic mail, downloaded from the Internet, downloaded from the Provider's servers or obtained from other sources, subject to the terms and conditions specified below.

THIS IS AN AGREEMENT ON END USER RIGHTS AND NOT AN AGREEMENT FOR SALE. The Provider continues to own the copy of the Software and the physical media contained in the sales package and any other copies that the End User is authorized to make pursuant to this Agreement.

By clicking on "I Accept" or "I Accept..." while installing, downloading, copying or using the Software, You agree to the terms and conditions of this Agreement. If You do not agree to all of the terms and conditions of this Agreement, immediately click on the canceling option, cancel the installation or download, or destroy or return the Software, installation media, accompanying documentation and sales receipt to the Provider or the outlet from which You acquired the Software.

YOU AGREE THAT YOUR USE OF THE SOFTWARE ACKNOWLEDGES THAT YOU HAVE READ THIS AGREEMENT, UNDERSTAND IT AND AGREE TO BE BOUND BY ITS TERMS AND CONDITIONS.

1. Software. As used in this Agreement the term "Software" means: (i) computer program accompanied by this Agreement and all components thereof; (ii) all the contents of the disks, CD-ROMs, DVDs, e-mails and any attachments, or other media with which this Agreement is provided, including the object code form of the Software supplied on a data carrier, via electronic mail or downloaded via the Internet; (iii) any related explanatory written materials and any other possible documentation related to the Software, above all any description of the Software, its specifications, any description of the Software properties or operation, any description of the operating environment in which the Software is used, instructions for use or installation of the Software or any description of how to use the Software (hereinafter referred to as " Documentation "); (iv) copies of the Software, patches for possible errors in the Software, additions to the Software, extensions to the Software, modified versions of the Software and updates of Software components, if any, licensed to You by the Provider pursuant to Article 3 of this Agreement. The Software shall be provided exclusively in the form of executable object code.

2. Installation, Computer and a License key. Software supplied on a data carrier, sent via electronic mail, downloaded from the Internet, downloaded from the Provider's servers or obtained from other sources requires installation. You must install the Software on a correctly configured Computer, complying at least with requirements set out in the Documentation. The installation methodology is described in the Documentation. No computer programs or hardware which could have an adverse effect on the Software may be installed on the Computer on which You install the Software. Computer means hardware, including but not limited to personal computers, laptops, workstations, palmtop computers, smart phones, hand-held electronic devices, or other electronic devices for which the Software is designed, on which it will be installed and/or used. License key means the unique sequence of symbols, letters, numbers or special signs provided to the End User in order to allow the legal use of the Software, its specific version or extension of the term of the License in compliance with this Agreement.

3. License. Subject to the condition that You have agreed to the terms of this Agreement and You comply with all the terms and conditions stipulated herein, the Provider shall grant You the following rights (hereinafter referred to as "License"):

a) **Installation and use.** You shall have the non-exclusive, non-transferable right to install the Software on the hard disk of a Computer or other permanent medium for data storage, installation and storage of the Software in the memory of a computer system and to implement, store and display the Software.

b) Stipulation of the number of licenses. The right to use the Software shall be bound by the number of End Users. One End User shall be taken to refer to the installation of the Software on one computer system.

c) **Business Edition.** A Business Edition version of the Software must be obtained to use the Software on mail servers, mail relays, mail gateways or Internet gateways.

d) **Term of the License.** Your right to use the Software shall be time-limited.

e) **OEM Software.** OEM Software shall be limited to the Computer You obtained it with. It cannot be transferred to a different Computer.

f) **NFR, TRIAL Software.** Software classified as "Not-for-resale", NFR or TRIAL cannot be assigned for payment and must only be used for demonstration or testing the Software's features.

4. Termination of the License. The License shall terminate automatically at the end of the period for which granted. If You fail to comply with any of the provisions of this Agreement, the Provider shall be entitled to withdraw from the Agreement, without prejudice to any entitlement or legal remedy open to the Provider in such

eventualities. In the event of cancellation of the License, You must immediately delete, destroy or return at your own cost, the Software and all backup copies to ESET or to the outlet from which You obtained the Software. Upon termination of the License, the Provider shall be also entitled to cancel the End User's entitlement to use the functions of the Software, which require connection to the Provider's servers or third-party servers.

5. Exercising End User rights. You must exercise End User rights in person or via your employees. You are only entitled to use the Software to safeguard your operations and protect those Computers or computers systems for which You have obtained a License.

6. Restrictions to rights. You may not copy, distribute, extract components or make derivative works of the Software. When using the Software, You are required to comply with the following restrictions:

(a) You may make one copy of the Software on a permanent storage medium as an archival back-up copy, provided your archival back-up copy is not installed or used on any Computer. Any other copies You make of the Software shall constitute breach of this Agreement.

(b) You may not use, modify, translate or reproduce the Software or transfer rights to use the Software or copies of the Software in any manner other than as provided for in this Agreement.

(c) You may not sell, sub-license, lease or rent or borrow the Software or use the Software for the provision of commercial services.

(d) You may not reverse engineer, reverse compile or disassemble the Software or otherwise attempt to discover the source code of the Software, except to the extent that this restriction is expressly prohibited by law.

(e) You agree that You will only use the Software in a manner that complies with all applicable laws in the jurisdiction in which You use the Software, including, but not limited to, applicable restrictions concerning copyright and other intellectual property rights.

(f) You agree that You will only use the Software and its functions in a way which does not limit the possibilities of other End Users to access these services. The Provider reserves the right to limit the scope of services provided to individual End Users, to enable use of the services by the highest possible number of End Users. Limiting the scope of services shall also mean complete termination of the possibility to use any of the functions of the Software and deletion of Data and information on the Provider's servers or third-party servers relating to a specific function of the Software.

(g) You agree not exercise any activities involving use the License key, contrary to the terms of this Agreement or leading to provide License key to any person who is not entitled to use the Software, such as the transfer of used or unused License key in any form, as well as the unauthorized reproduction, or distribution of duplicated or generated License keys or using the Software as a result of the use of a License key obtained from the source other than the Provider.

7. Copyright. The Software and all rights, without limitation including proprietary rights and intellectual property rights thereto are owned by ESET and/or its licensors. They are protected by international treaty provisions and by all other applicable national laws of the country in which the Software is being used. The structure, organization and code of the Software are the valuable trade secrets and confidential information of ESET and/or its licensors. You must not copy the Software, except as set forth in Article 6(a). Any copies which You are permitted to make pursuant to this Agreement must contain the same copyright and other proprietary notices that appear on the Software. If You reverse engineer, reverse compile, disassemble or otherwise attempt to discover the source code of the Software, in breach of the provisions of this Agreement, You hereby agree that any information thereby obtained shall automatically and irrevocably be deemed to be transferred to and owned by the Provider in full, from the moment such information comes into being, notwithstanding the Provider's rights in relation to breach of this Agreement.

8. Reservation of rights. The Provider hereby reserves all rights to the Software, with the exception of rights expressly granted under the terms of this Agreement to You as the End User of the Software.

9. Multiple language versions, dual media software, multiple copies. In the event that the Software supports multiple platforms or languages, or if You receive multiple copies of the Software, You may only use the Software for the number of computer systems and for the versions for which You obtained a License. You may not sell, rent, lease, sub-license, lend or transfer versions or copies of the Software which You do not use.

10. Commencement and termination of the Agreement. This Agreement shall be effective from the date You agree to the terms of this Agreement. You may terminate this Agreement at any time by permanently uninstalling, destroying and returning, at your own cost, the Software, all back-up copies and all related materials provided by the Provider or its business partners. Irrespective of the manner of termination of this Agreement, the provisions of Articles 7, 8, 11, 13, 19 and 21 shall continue to apply for an unlimited time.

11. END USER DECLARATIONS. AS THE END USER YOU ACKNOWLEDGE THAT THE SOFTWARE IS PROVIDED "AS IS", WITHOUT WARRANTY OF ANY KIND, EXPRESS OR IMPLIED, AND TO THE MAXIMUM EXTENT PERMITTED BY APPLICABLE LAW. NEITHER THE PROVIDER, ITS LICENSORS OR AFFILIATES, NOR THE COPYRIGHT HOLDERS MAKE ANY REPRESENTATIONS OR WARRANTIES, EXPRESS OR IMPLIED, INCLUDING BUT NOT LIMITED TO THE WARRANTIES OF MERCHANTABILITY OR FITNESS FOR A PARTICULAR PURPOSE OR THAT THE SOFTWARE WILL NOT INFRINGE ANY THIRD-PARTY PATENTS, COPYRIGHTS, TRADEMARKS OR OTHER RIGHTS. THERE IS NO WARRANTY BY THE PROVIDER OR BY ANY OTHER PARTY THAT THE FUNCTIONS CONTAINED IN THE SOFTWARE WILL MEET YOUR REQUIREMENTS OR THAT THE OPERATION OF THE SOFTWARE WILL BE UNINTERRUPTED OR ERROR-FREE. YOU ASSUME ALL RESPONSIBILITY AND RISK FOR THE SELECTION OF THE SOFTWARE TO ACHIEVE YOUR INTENDED RESULTS AND FOR THE INSTALLATION, USE AND RESULTS OBTAINED FROM IT.

12. No other obligations. This Agreement creates no obligations on the part of the Provider and its licensors other than as specifically set forth herein.

13. LIMITATION OF LIABILITY. TO THE MAXIMUM EXTENT PERMITTED BY APPLICABLE LAW, IN NO EVENT SHALL THE PROVIDER, ITS EMPLOYEES OR LICENSORS BE LIABLE FOR ANY LOST PROFITS, REVENUE, SALES, DATA OR COSTS OF PROCUREMENT OF SUBSTITUTE GOODS OR SERVICES, PROPERTY DAMAGE, PERSONAL INJURY, INTERRUPTION OF BUSINESS, LOSS OF BUSINESS INFORMATION OR FOR ANY SPECIAL, DIRECT, INDIRECT, INCIDENTAL, ECONOMIC, COVER, PUNITIVE, SPECIAL OR CONSEQUENTIAL DAMAGES, HOWEVER CAUSED AND WHETHER ARISING UNDER CONTRACT, TORT, NEGLIGENCE OR OTHER THEORY OF LIABILITY, ARISING OUT OF THE USE OF OR INABILITY TO USE THE SOFTWARE, EVEN IF THE PROVIDER OR ITS LICENSORS OR AFFILIATES ARE ADVISED OF THE POSSIBILITY OF SUCH DAMAGES. BECAUSE SOME COUNTRIES AND JURISDICTIONS DO NOT ALLOW THE EXCLUSION OF LIABILITY, BUT MAY ALLOW LIABILITY TO BE LIMITED, IN SUCH CASES, THE LIABILITY OF THE PROVIDER, ITS EMPLOYEES OR LICENSORS OR AFFILIATES SHALL BE LIMITED TO THE SUM THAT YOU PAID FOR THE LICENSE.

14. Nothing contained in this Agreement shall prejudice the statutory rights of any party dealing as a consumer if running contrary thereto.

15. Technical support. ESET or third parties commissioned by ESET shall provide technical support at their own discretion, without any guarantees or declarations. The End User shall be required to back up all existing data, software and program facilities prior to the provision of technical support. ESET and/or third parties commissioned by ESET cannot accept liability for damage or loss of data, property, software or hardware or loss of profits due to the provision of technical support. ESET and/or third parties commissioned by ESET reserve the right to decide that resolving the problem is beyond the scope of technical support. ESET reserves the right to refuse, suspend or terminate the provision of technical support at its own discretion. License information, Information and other data in compliance with Privacy Policy may be required for the purpose of technical support provision.

16. Transfer of the License. The Software can be transferred from one Computer to another, unless contrary to the terms of the Agreement. If not contrary to the terms of the Agreement, the End User shall only be entitled to permanently transfer the License and all rights ensuing from this Agreement to another End User with the Provider's consent, subject to the condition that (i) the original End User does not retain any copies of the Software; (ii) the transfer of rights must be direct, i.e. from the original End User to the new End User; (iii) the new End User must assume all the rights and obligations incumbent on the original End User under the terms of this Agreement; (iv) the original End User has to provide the new End User with documentation enabling verification of the genuineness of the Software as specified under Article 17.

17. Verification of the genuineness of the Software. The End User may demonstrate entitlement to use the Software in one of the following ways: (i) through a license certificate issued by the Provider or a third party appointed by the Provider; (ii) through a written license agreement, if such an agreement was concluded; (iii) through the submission of an e-mail sent by the Provider containing licensing details (user name and password). License information and End User identification data in compliance with Privacy Policy may be required for the purpose of Software genuineness verification.

18. Licensing for public authorities and the US Government. The Software shall be provided to public authorities, including the United States Government, with the license rights and restrictions described in this Agreement.

19. Trade control compliance.

(a) You will not, directly or indirectly, export, re-export, transfer or otherwise make available the Software to any person, or use it in any manner, or be involved in any act, that could result in ESET or its holding companies, its subsidiaries, and the subsidiaries of any of its holding companies, as well as entities controlled by its holding companies (hereinafter referred to as "Affiliates") being in violation of, or being subject to negative consequences under, Trade Control Laws which includes

i. any laws that control, restrict, or impose licensing requirements on export, re-export or transfer of goods, software, technology, or services, issued or adopted by any government, state or regulatory authority of the United States of America, Singapore, the United Kingdom, the European Union or any of its Member States, or any country in which obligations under the Agreement are to be performed, or in which ESET or any of its Affiliates are incorporated or operate (hereinafter referred to as "Export Control Laws") and

ii. any economic, financial, trade or other, sanction, restriction, embargo, import or export ban, prohibition on transfer of funds or assets or on performing services, or equivalent measure imposed by any government, state or regulatory authority of the United States of America, Singapore, the United Kingdom, the European Union or any of its Member States, or any country in which obligations under the Agreement are to be performed, or in which ESET or any of its Affiliates are incorporated or operate (hereinafter referred to as "Sanction Laws").

(b) ESET shall have the right to suspend its obligations under, or terminate, these Terms with immediate effect in the event that:

i. ESET determines that, in its reasonable opinion, the User has breached or is likely to breach provision of Article 19.a of the Agreement; or

ii. the End User and/or the Software become subject to Trade Control Laws and, as a result, ESET determines that, in its reasonable opinion, the continued performance of its obligations under the Agreement could result in ESET or its Affiliates being in violation of, or being subject to negative consequences under, Trade Control Laws.

(c) Nothing in the Agreement is intended, and nothing should be interpreted or construed, to induce or require either party to act or refrain from acting (or to agree to act or refrain from acting) in any manner which is inconsistent with, penalized, or prohibited under any applicable Trade Control Laws.

20. **Notices.** All notices and return of the Software and Documentation must be delivered to: ESET, spol. s r. o., Einsteinova 24, 851 01 Bratislava, Slovak Republic.

21. **Applicable law.** This Agreement shall be governed by and construed in accordance with the laws of the Slovak Republic. The End User and the Provider hereby agree that the principles of the conflict of laws and the United Nations Convention on Contracts for the International Sale of Goods shall not apply. You expressly agree that any disputes or claims ensuing from this Agreement with respect to the Provider or any disputes or claims relating to use of the Software shall be settled by Bratislava I District Court and You expressly agree to the said court exercising jurisdiction.

22. **General provisions.** Should any of the provisions of this Agreement be invalid or unenforceable, this shall not affect the validity of the other provisions of the Agreement, which shall remain valid and enforceable under the conditions stipulated therein. In case of a discrepancy between language versions of this Agreement, the English version shall prevail. This Agreement may only be modified in written form, signed by an authorized representative of the Provider, or a person expressly authorized to act in this capacity under the terms of a power of attorney.

This is the entire Agreement between the Provider and You relating to the Software and it supersedes any prior representations, discussions, undertakings, communications or advertising relating to the Software.

EULA ID: BUS-LOG-20-01